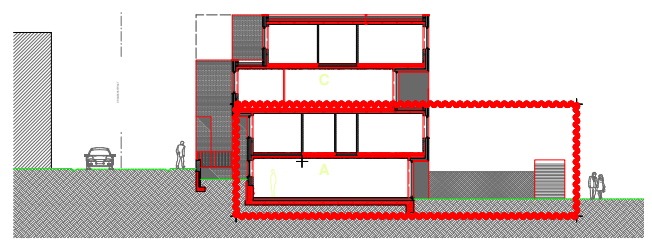
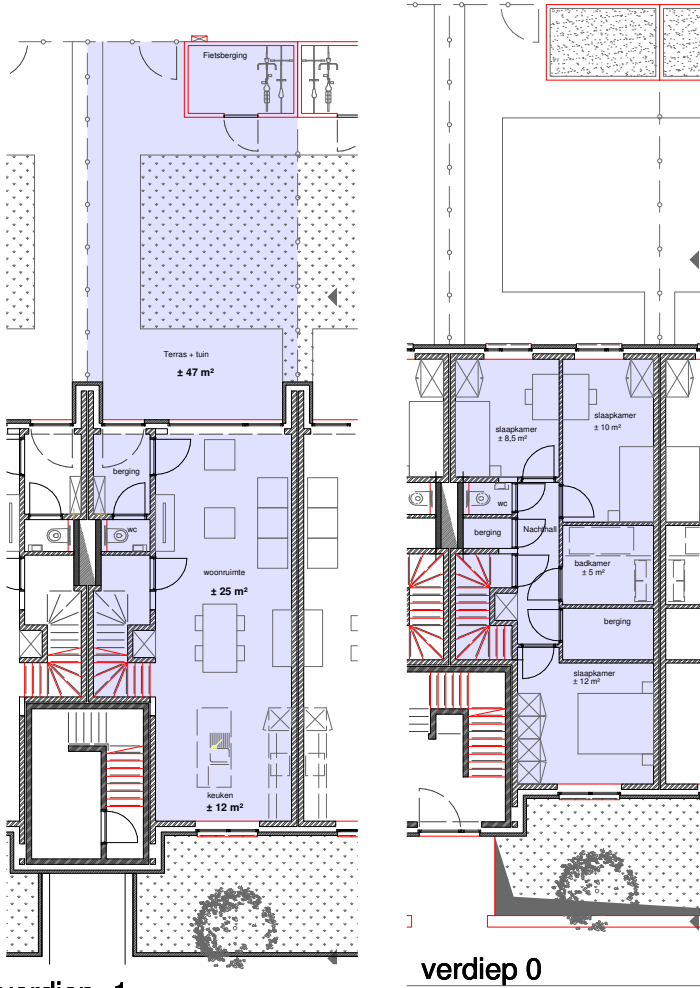


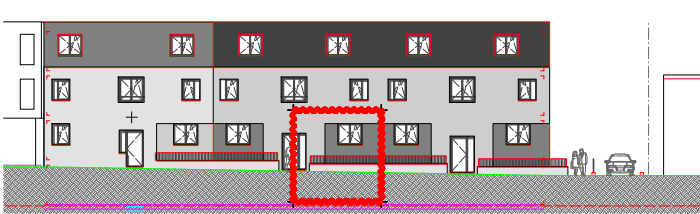


Duplexwoning 102

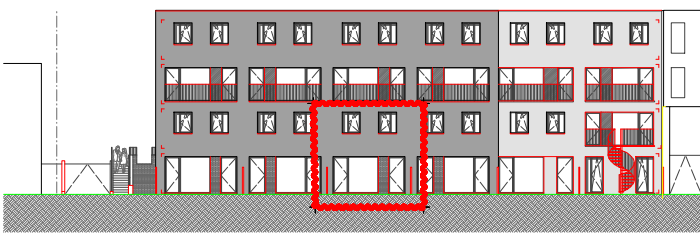
totaal Opp.: ± 156 m²
Bewoonbare Opp.: ± 100 m²
Terras + tuin: ja - ± 47 m²
slaapkamers: 3 (± 12 m², ± 10 m², ± 8,5 m²)
Badkamer: 5 m²
Keuken: 12 m²
Woonruimte: ± 25 m²
Toilet: 2



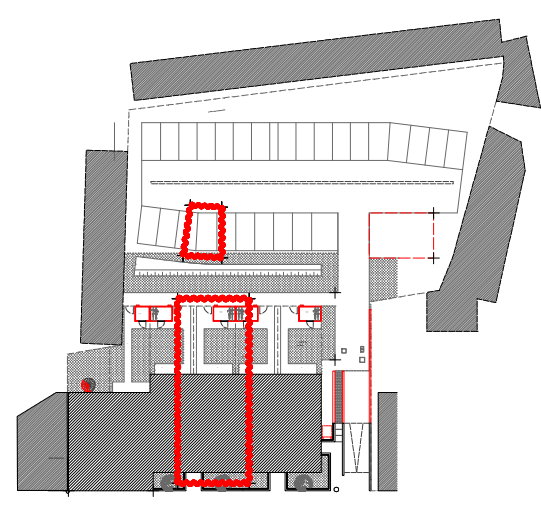
Snededetail



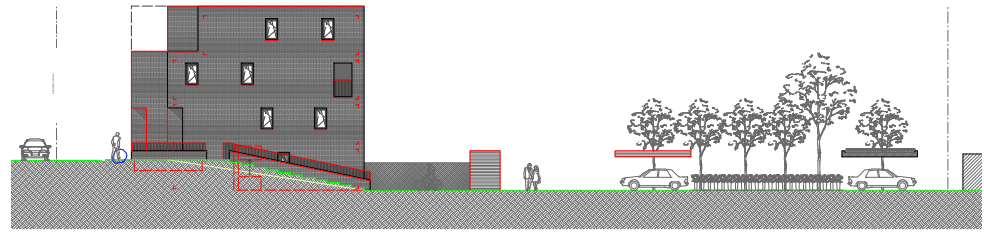
Voorgevel



Achtergevel



Inplantingsplan



Zijgevel inrit