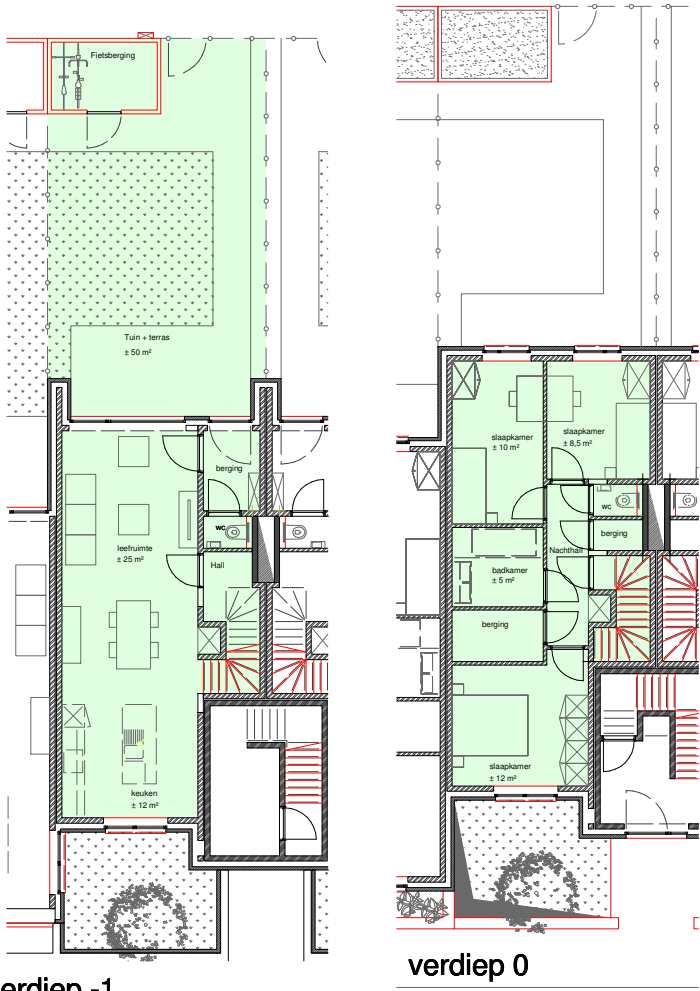


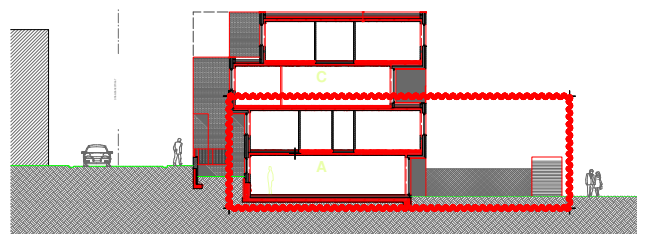
Duplexwoning 104

totaal Opp.: ± 157 m²
 Bewoonbare Opp.: ± 100 m²
 Terras + tuin: ja - 50 m²
 slaapkamers: 3 (± 12 m², ± 10 m², ± 8,5 m²)
 Badkamer: 5 m²
 Keuken: 12 m²
 Woonruimte: ± 25 m²
 Toilet: 2

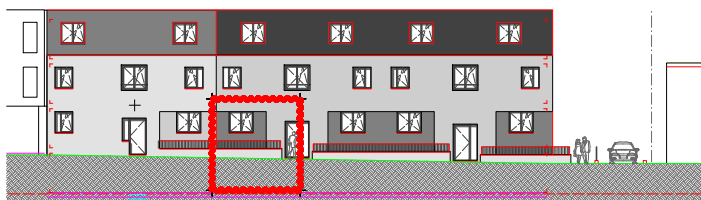


verdiep -1

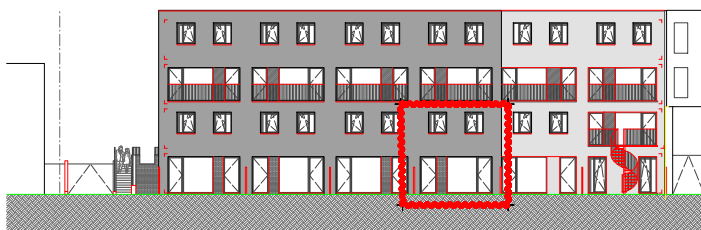
verdiep 0



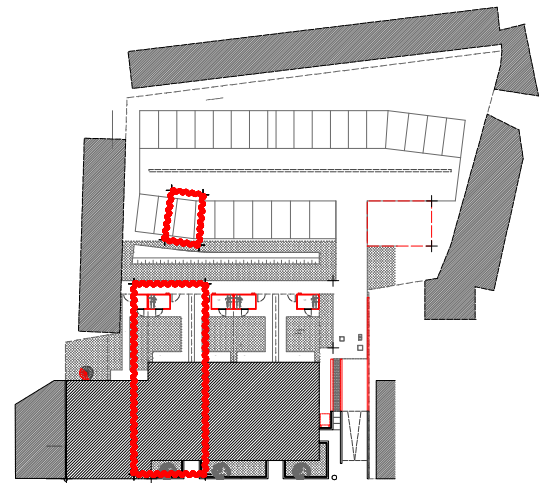
Snedes



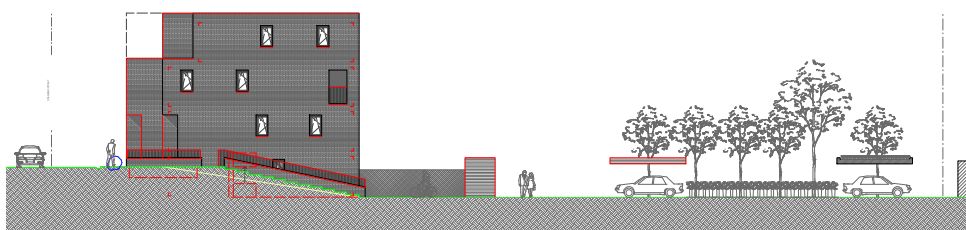
Voorgevel



Achtergevel



Inplantingsplan



Zijgevel inrit