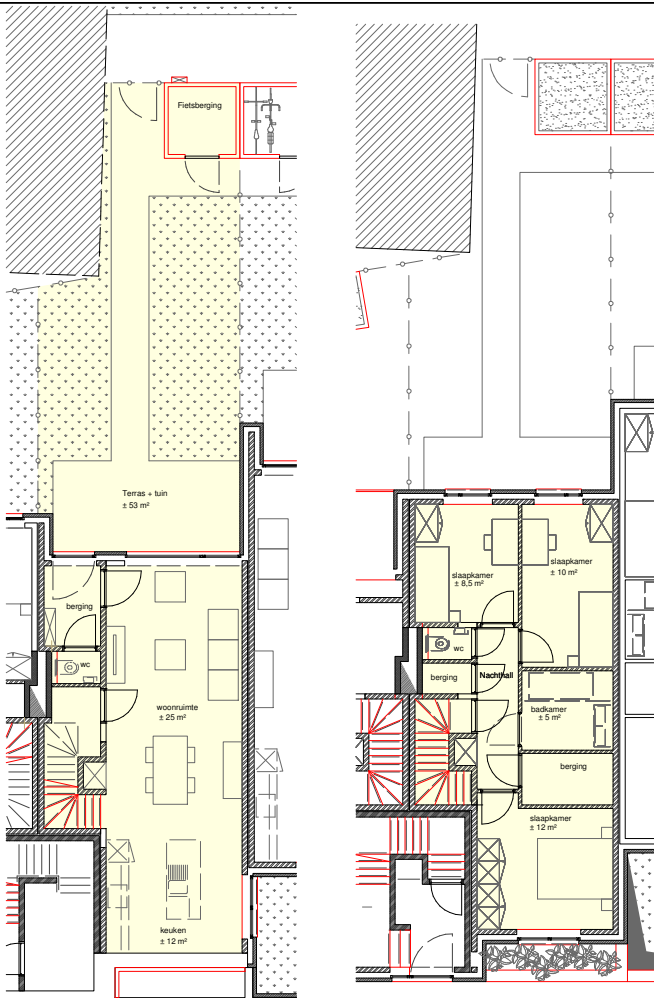


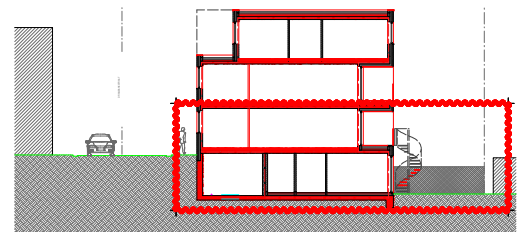
Duplexwoning 104A

totaal Opp.: ±158 m²
 Bewoonbare Opp.: ±101 m²
 Terras : ja - ±9,46 m²
 Tuin: ja - ±31 m²
 slaapkamers: 3 (± 12 m², ± 10 m², ± 8 m²)
 Badkamer: ± 51 m²
 Keuken: ± 12 m²
 Woonruimte: ± 25 m²
 Toilet: 2



verdiep -1

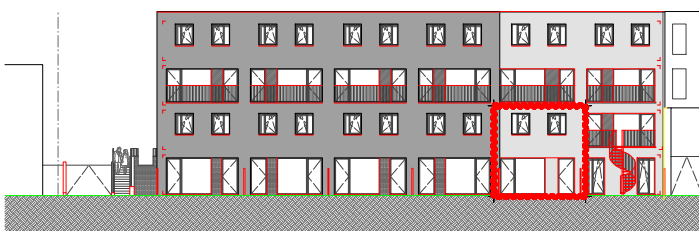
verdiep 0



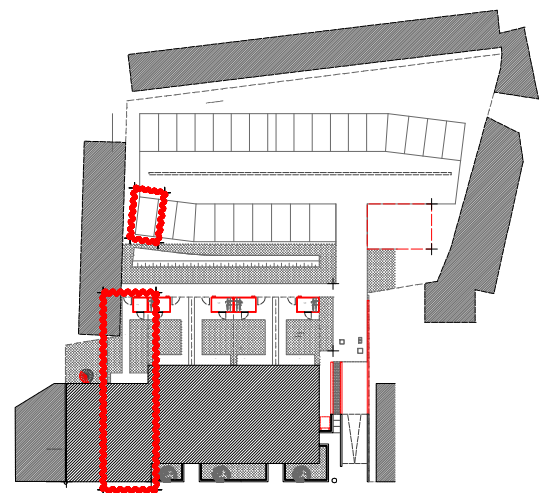
Snedede



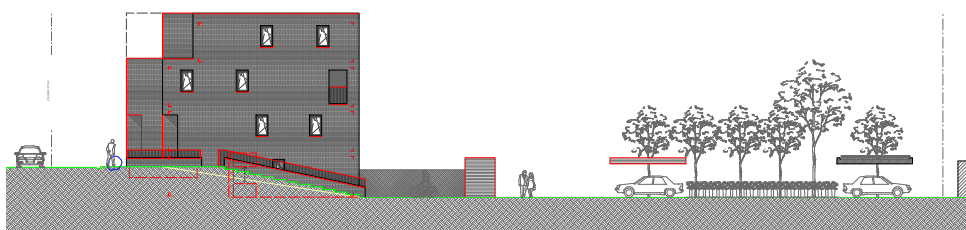
Voorgevel



Achtergevel



Inplantingsplan



Zijgevel inrit