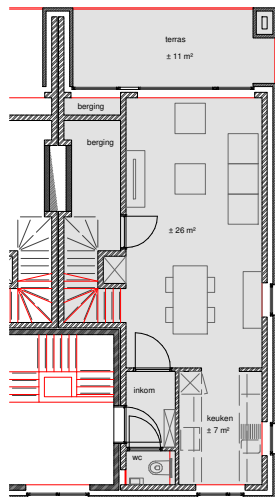
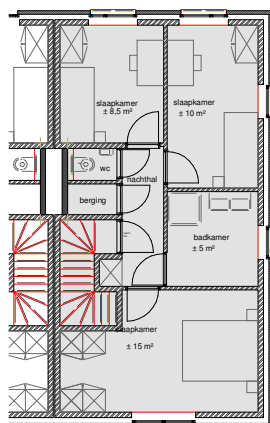


Duplexwoning 106 bus 0101

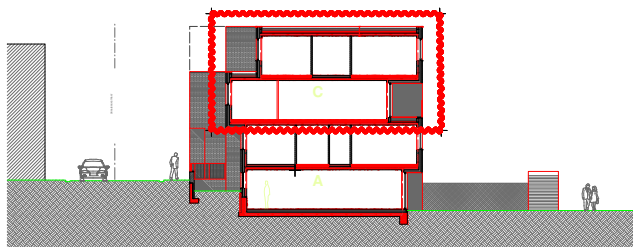
totaal Opp.: ± 110 m²
 Bewoonbare Opp.: ± 100 m²
 Terras: ± 11 m²
 slaapkamers: 3 (± 15 m², ± 10 m², ± 8,5 m²)
 Badkamer: ± 6 m²
 Keuken: ± 7 m²
 Woonruimte: ± 26 m²
 Toilet: 2



verdiep 1



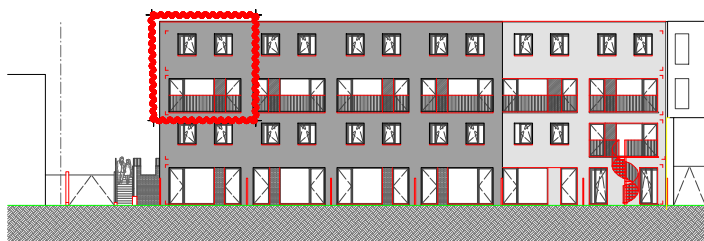
verdiep 2



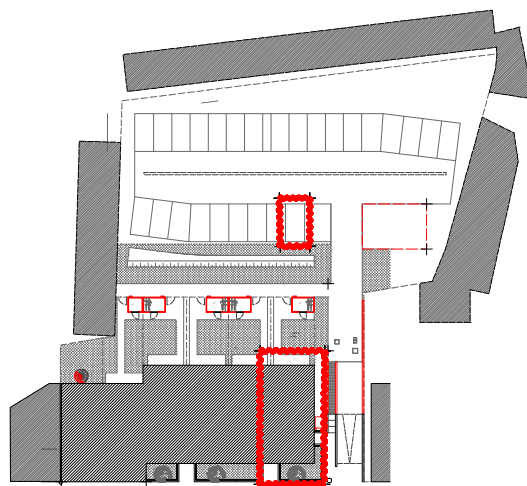
Snedede



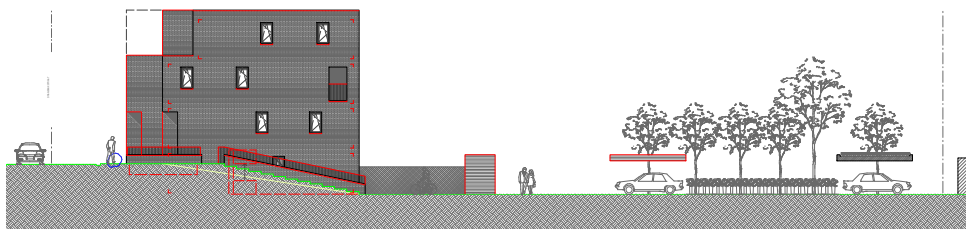
Voorgevel



Achtergevel



Inplantingsplan



Zijgevel inrit