

Duplexwoning 1 bus 0101

totaal Opp.: ± 107 m²

Bewoonbare Opp.: ± 97 m²

Terras: ± 10 m²

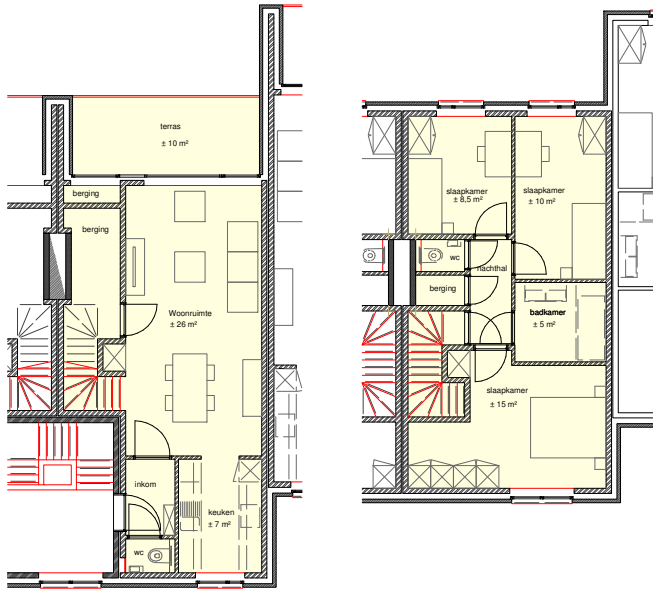
slaapkamers: 3 (± 15 m², ± 10 m², ± 8,5 m²)

Badkamer: ± 5 m²

Keuken: ± 7 m²

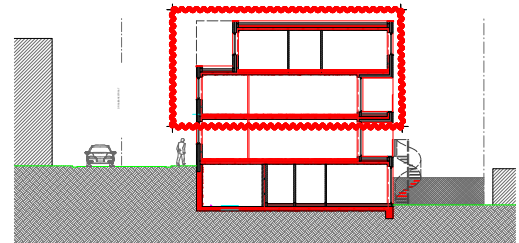
Woonruimte: ± 26 m²

Toilet: 2



verdiep 1

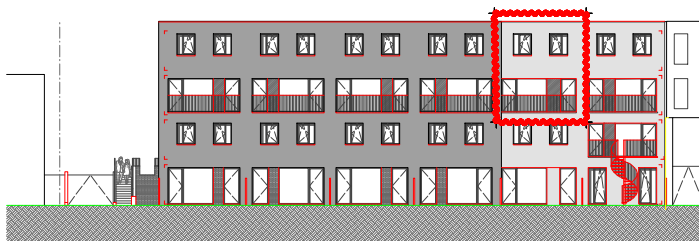
verdiep 2



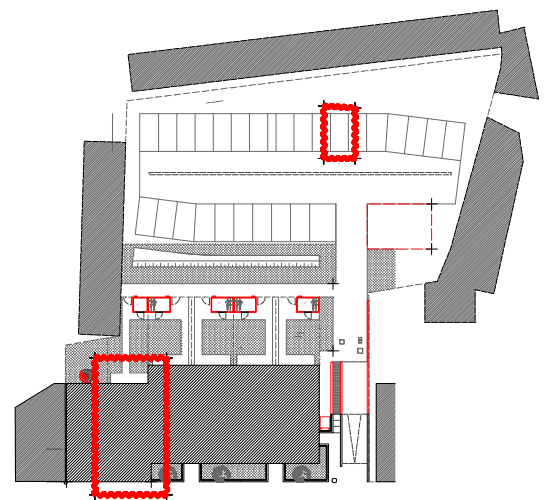
Snede



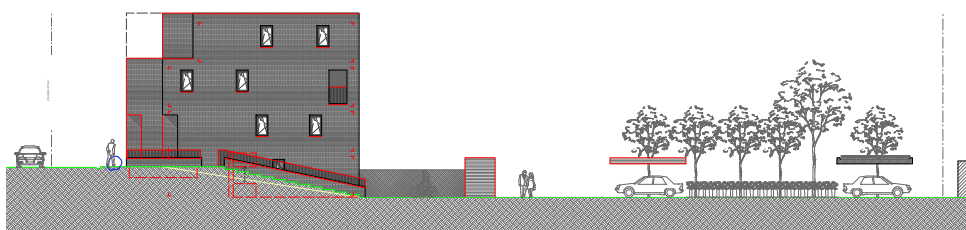
Voorgevel



Achtergevel



Inplantingsplan



Zijgevel inrit