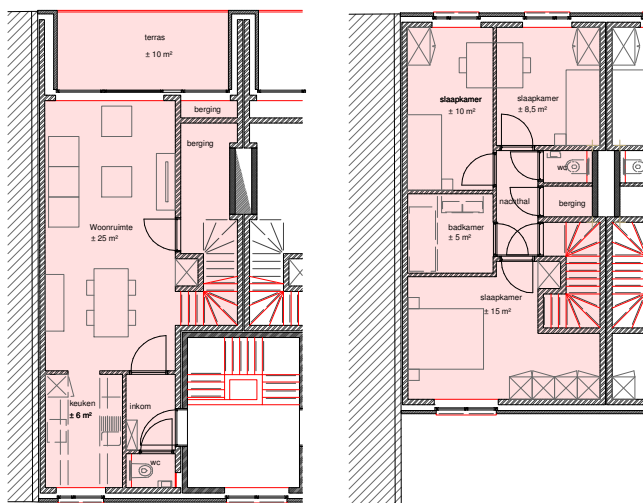


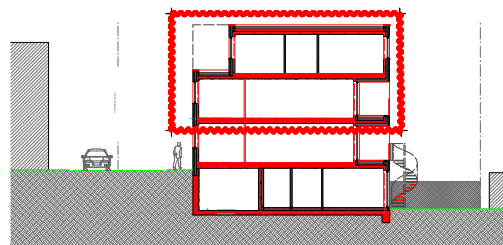
# Duplexwoning 110 bus 0102

totaal Opp.: ± 104 m<sup>2</sup>  
 Bewoonbare Opp.: ± 94 m<sup>2</sup>  
 Terras: ± 10 m<sup>2</sup>  
 slaapkamers: 3 (± 15 m<sup>2</sup>, ± 10 m<sup>2</sup>, ± 8,5 m<sup>2</sup>)  
 Badkamer: ± 5 m<sup>2</sup>  
 Keuken: ± 6 m<sup>2</sup>  
 woonruimte: ± 25 m<sup>2</sup>  
 Toilet: 2



verdiep 1

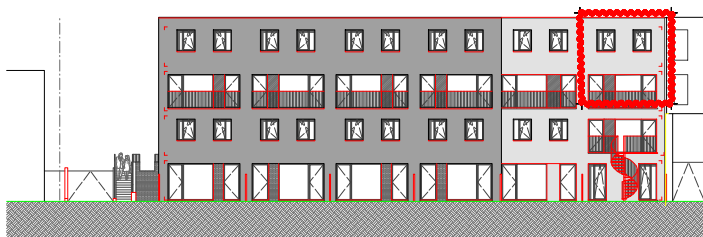
verdiep 2



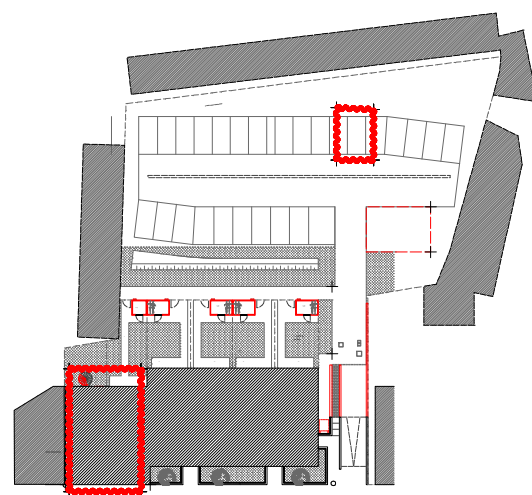
Snede



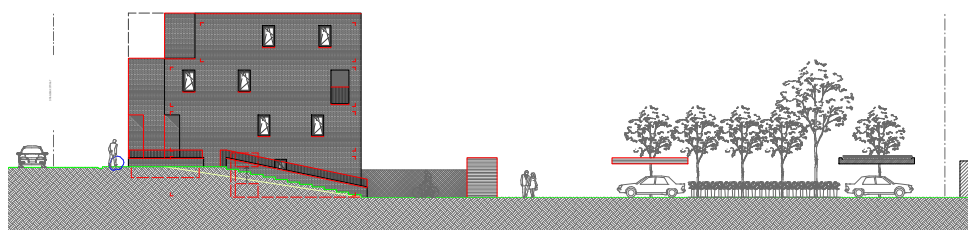
Voorgevel



Achtergevel



Inplantingsplan



Zijgevel inrit