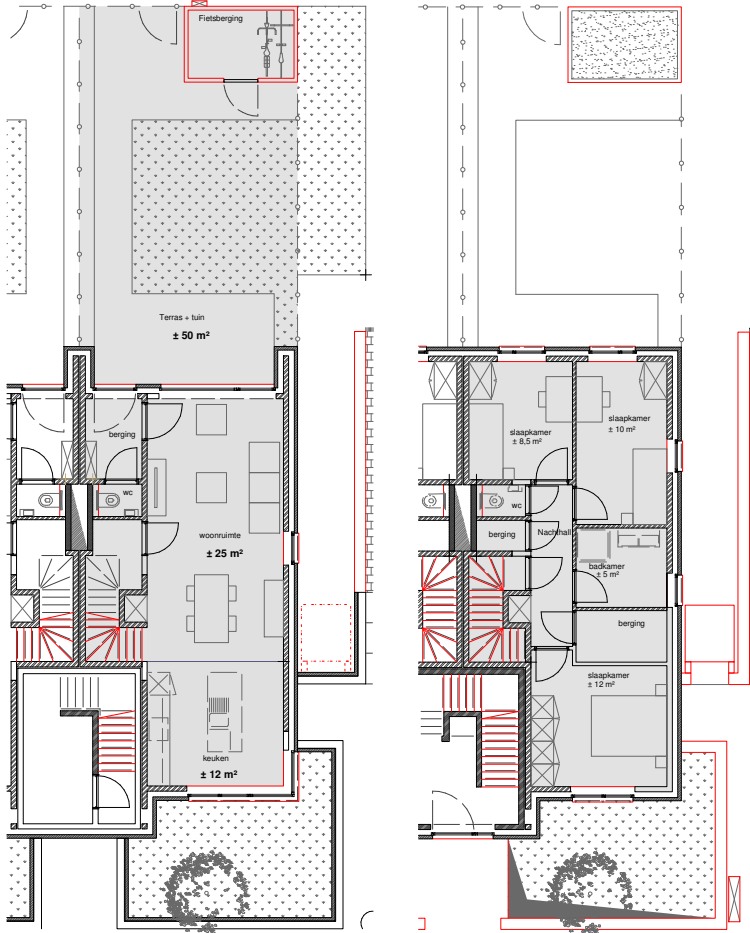




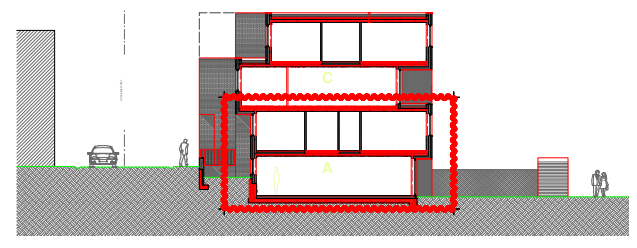
# Duplexwoning 98

totaal Opp.: ± 159 m<sup>2</sup>  
 Bewoonbare Opp.: ± 100 m<sup>2</sup>  
 Terras + tuin: ja - ± 50 m<sup>2</sup>  
 slaapkamers: 3 (± 12 m<sup>2</sup>, ± 10 m<sup>2</sup>, ± 8,5 m<sup>2</sup>)  
 Badkamer: 5 m<sup>2</sup>  
 Keuken: 12 m<sup>2</sup>  
 Woonruimte: ± 25 m<sup>2</sup>  
 Toilet: 2



verdiep -1

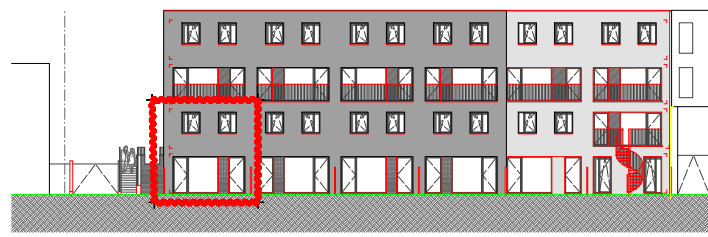
verdiep 0



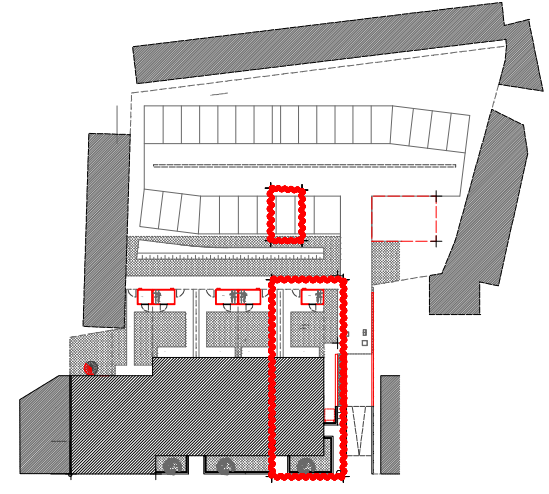
Snedes



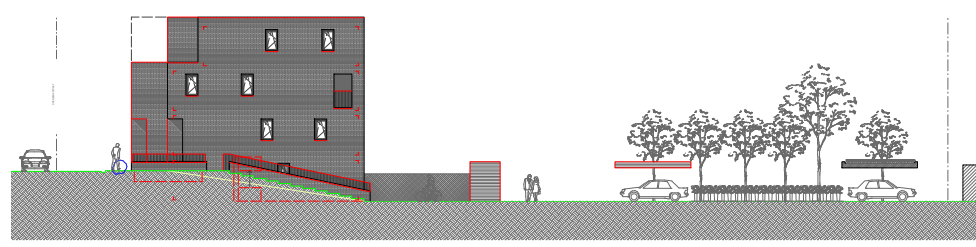
Voorgevel



Achtergevel



Inplantingsplan



Zijgevel inrit